

## North Memphis Industrial Park

Thomas Street @ Firestone · Memphis, TN 38107



- 1.9 Million SF Industrial Complex
- Great location for distribution, manufacturing/processing plant
- Close proximity to I-55 and I-240 interchange
- Convenient access to major trucking lines

North Memphis Industrial Park is a 433 acre industrial complex with an unbeatable location for a distribution center, manufacturing or processing plant as well as an office/showroom/service facility. The North Memphis Industrial Park is in close proximity to the I-55 and I-240 interchange. Located 15 minutes from the Memphis International Airport and the Federal Express Super Hub, the park has direct access to river, rail, air and interstate transport with convenient access to major trucking lines.

## Market Information

Memphis, Tennessee is located near the geographic center of the country and has become known as "America's Distribution Center" through its superior distribution, logistics and transportation infrastructure. The Memphis International Airport is the world's busiest cargo airport, with 15 cargo airlines. Because of its river crossing, Memphis is a gateway city that plays a major role in national rail transportation with five Class I railroads converging in Memphis. The Port of Memphis located south of downtown is the second largest inland port on the Mississippi River and the fourth busiest in the country.

Over one million residents live in the Memphis area and over 8 million domestic and international visitors come to Memphis each year. Major areas of employment include distribution, financial services, healthcare, and retail. The international headquarters of FedEx employs 30,000 people in the region, more than any other single business. Additionally, the NBA Memphis Grizzlies were established in 2002 and recently opened their new stadium, the FedExForum.

In addition to its superior infrastructure, Memphis is recognized for its vibrant and growing downtown. Memphis is known for its music that is a mixture of blues, rock and roll, R & B, and gospel that creates an infectious blend of soul and sensation unique to the city. Many music festivals are held each year, including the Memphis in May Beale Street Music Festival which brings people from all over the world to the Bluff City.

### MEMPHIS

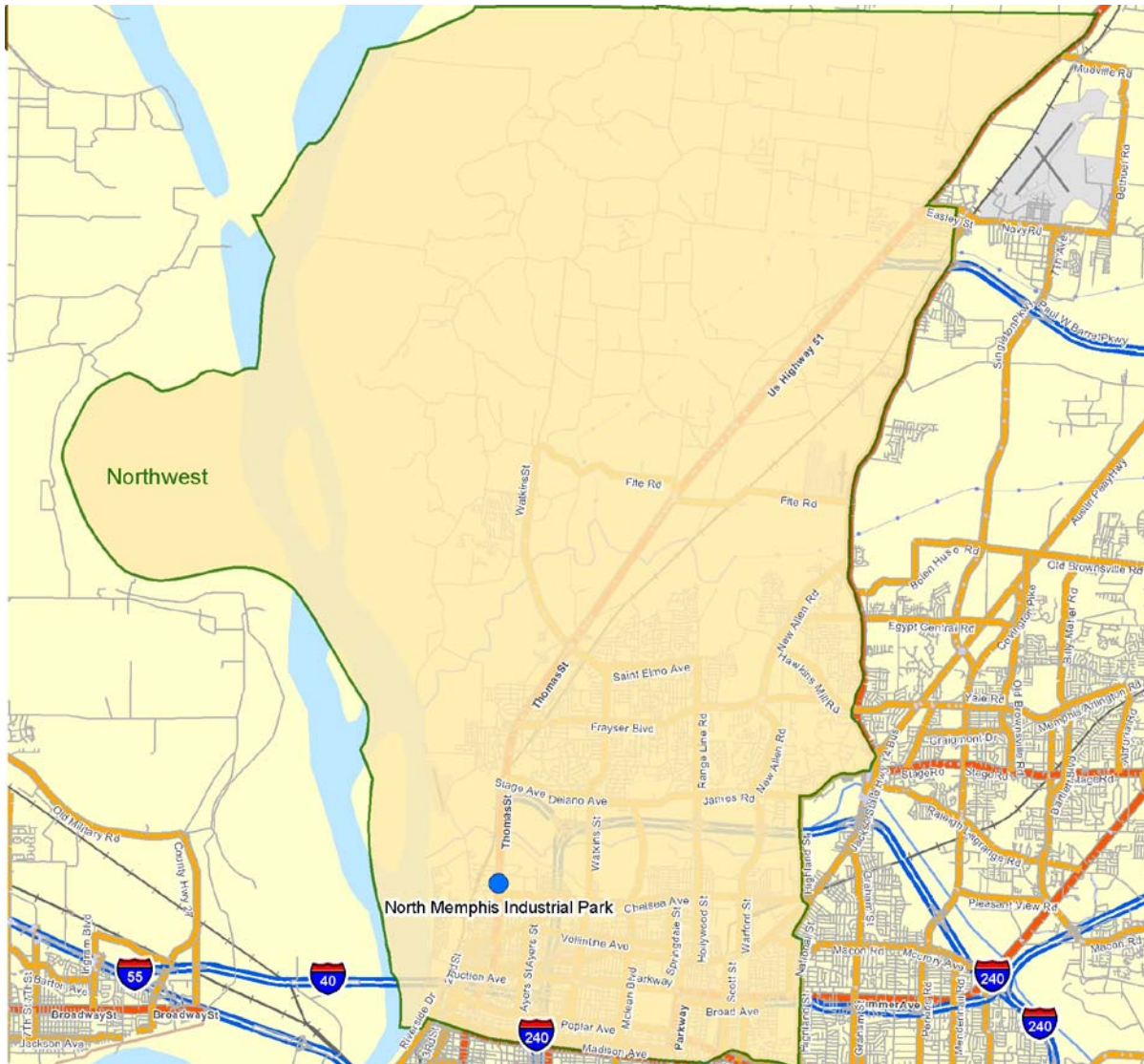




### SubMarket Information

MEMPHIS · NORTHWEST · INDUSTRIAL

Contains all properties located east of the Mississippi River, north of Union Avenue, and west of Highland and East Parkway.





## North Memphis Industrial Park

Thomas Street @ Firestone · Memphis, TN 38107



### Available Units

<u>BUILDING</u>	<u>UNIT</u>	<u>TOTAL RENTABLE</u>	<u>USE TYPE</u>
802 Royal	A010	25,712 ( SF )	INDUSTRIAL
786 Royal	B010	25,435 ( SF )	INDUSTRIAL
744 Royal	C010	35,000 ( SF )	INDUSTRIAL
706 Royal Avenue	D010	34,708 ( SF )	INDUSTRIAL
706 Royal Avenue	D030	50,000 ( SF )	INDUSTRIAL
706 Royal Avenue	D040	18,350 ( SF )	INDUSTRIAL
1500 Thomas #1	E010	27,000 ( SF )	INDUSTRIAL
1500 Thomas #2	E015	13,257 ( SF )	INDUSTRIAL
1500 Thomas #2	E020	12,750 ( SF )	INDUSTRIAL
801 Royal Avenue	F010	1,800 ( SF )	INDUSTRIAL
1432 Thomas Street	H020	12,408 ( SF )	INDUSTRIAL
655 Corrine	L010	5,000 ( SF )	INDUSTRIAL
653 Corrine	L020	62,078 ( SF )	INDUSTRIAL
730-750 Huron	M010	50,000 ( SF )	INDUSTRIAL
700 Huron	N010	29,000 ( SF )	INDUSTRIAL
700 Firestone Blvd.	S010	66,726 ( SF )	INDUSTRIAL



## North Memphis Industrial Park

Thomas Street @ Firestone · Memphis, TN 38107



### UNIT INFORMATION

**Unit ID:** A010

**Address:** 802 Royal Memphis, TN 38107

**Unit Area:** 25,712 Square Feet Available

#### ● Exterior Walls:

Min. Width :

Min. Height:

Material: Masonry

#### ● Loading:

# Loading Docks - 1

8 x 8

# Drive-In Doors - 7

8 x 10

#### ● Floors:

Thickness: 0"

Concrete

#### ● Clear Heights:

Min. Heights: 19' 10"

#### ● Fire Suppression:

Type: Wet

Density:0

#### ● Column Spacing:

Spacing: 28' x 25'

#### ● HVAC:

Type: Gas-Fired Unit Heaters

Tonnage:0

#### ● Roofing System:

Material: Fiber

Built up

#### ● Lighting:

Type: Fluorescent

#### ● Parking Area:

Available from Asset Management Services

#### ● Electrical:

Min. Capacity: 0

Min. Voltage:

Phase: 0



## North Memphis Industrial Park

Thomas Street @ Firestone · Memphis, TN 38107



### UNIT INFORMATION

**Unit ID:** B010

**Address:** 786 Royal Memphis, TN 38107

**Unit Area:** 25,435 Square Feet Available

#### ● Exterior Walls:

Min. Width :

Min. Height:

Material: Masonry

#### ● Loading:

# Loading Docks - 4

# Drive-In Doors - 1

#### ● Floors:

Thickness: 5"

Concrete

#### ● Clear Heights:

Min. Heights: 13' 9"

#### ● Fire Suppression:

Available from Asset Management Services

#### ● Column Spacing:

Spacing: 31' x 31'

#### ● HVAC:

Type: GFU

#### ● Roofing System:

Material: Fiber

Built up

#### ● Lighting:

Type: Fluorescent

#### ● Parking Area:

Available from Asset Management Services

#### ● Electrical:

Available from Asset Management Services



## North Memphis Industrial Park

Thomas Street @ Firestone · Memphis, TN 38107



### UNIT INFORMATION

**Unit ID:** C010

**Address:** 744 Royal Memphis, TN 38107

**Unit Area:** 35,000 Square Feet Available

#### ● Exterior Walls:

Min. Width :

Min. Height:

Material: Masonry

#### ● Loading:

# Loading Docks - 2

45"

# Drive-In Doors - 0

#### ● Floors:

Thickness: 5"

#### ● Clear Heights:

Min. Heights: 14'

#### ● Fire Suppression:

Type: Dry System

Density:0

#### ● Column Spacing:

Spacing: 26' x 26'

#### ● HVAC:

Type:

Tonnage:0

0

#### ● Roofing System:

Material: Fiber

Built up

#### ● Lighting:

Type: Fluorescent

0

#### ● Parking Area:

Available from Asset Management Services

#### ● Electrical:

Min. Capacity: 0

Min. Voltage:

Phase: 0

0



## North Memphis Industrial Park

Thomas Street @ Firestone · Memphis, TN 38107



### UNIT INFORMATION

**Unit ID:** D010

**Address:** 706 Royal Avenue Memphis, TN 38107

**Unit Area:** 34,708 Square Feet Available

#### ● Exterior Walls:

Min. Width :

Min. Height:

Material: Masonry

#### ● Loading:

# Loading Docks - 7

48"

# Drive-In Doors - 1

#### ● Floors:

Thickness: 5"

Concrete

#### ● Clear Heights:

Min. Heights: 14' 10"

#### ● Fire Suppression:

Type: Dry

#### ● Column Spacing:

Spacing: 31' x 26'

#### ● HVAC:

Type: GFU

#### ● Roofing System:

Material: Fiber

Built up

#### ● Lighting:

Type: Fluorescent

#### ● Parking Area:

Available from Asset Management Services

#### ● Electrical:

Available from Asset Management Services



## North Memphis Industrial Park

Thomas Street @ Firestone · Memphis, TN 38107



### UNIT INFORMATION

**Unit ID:** D030

**Address:** 706 Royal Avenue Memphis, TN 38107

**Unit Area:** 50,000 Square Feet Available

#### ● Exterior Walls:

Material: Masonry

#### ● Loading:

# Loading Docks - 0

# Drive-In Doors - 5

12 x 10

#### ● Floors:

Thickness: 5"  
Concrete

#### ● Clear Heights:

Min. Heights: 17'

#### ● Fire Suppression:

Type: Dry

#### ● Column Spacing:

Spacing: 25' x 30'

#### ● HVAC:

Type: GFU

#### ● Roofing System:

Material: Fiber  
Built up

#### ● Lighting:

Type: Fluorescent

#### ● Parking Area:

Available from Asset Management Services

#### ● Electrical:

Available from Asset Management Services





## North Memphis Industrial Park

Thomas Street @ Firestone · Memphis, TN 38107



### UNIT INFORMATION

**Unit ID:** D040

**Address:** 706 Royal Avenue Memphis, TN 38107

**Unit Area:** 18,350 Square Feet Available

#### ● Exterior Walls:

Material: Masonry

#### ● Loading:

# Loading Docks - 2  
12 x 14

# Drive-In Doors - 1  
10 x 12

#### ● Floors:

Thickness: 5"  
Concrete

#### ● Clear Heights:

Min. Heights: 17'

#### ● Fire Suppression:

Type: Dry

#### ● Column Spacing:

Spacing: 25' x 30'

#### ● HVAC:

Type: GFU

#### ● Roofing System:

Material: Fiber  
Built up

#### ● Lighting:

Type: Fluorescent

#### ● Parking Area:

Available from Asset Management Services

#### ● Electrical:

Available from Asset Management Services



## North Memphis Industrial Park

Thomas Street @ Firestone · Memphis, TN 38107



### UNIT INFORMATION

**Unit ID:** E010

**Address:** 1500 Thomas #1 Memphis, TN 38107

**Unit Area:** 27,000 Square Feet Available

#### ● Exterior Walls:

Material: Masonry

#### ● Loading:

# Loading Docks - 0

# Drive-In Doors - 2

#### ● Floors:

Thickness: 5"  
Concrete

#### ● Clear Heights:

Min. Heights: 18'

#### ● Fire Suppression:

Type: Wet

#### ● Column Spacing:

Spacing: 40' x 40'

#### ● HVAC:

Type: GFU

#### ● Roofing System:

Material: Modified Bitumen  
Built up

#### ● Lighting:

Type: Fluorescent

#### ● Parking Area:

Available from Asset Management Services

#### ● Electrical:

Available from Asset Management Services



## North Memphis Industrial Park

Thomas Street @ Firestone · Memphis, TN 38107



### UNIT INFORMATION

**Unit ID:** E015

**Address:** 1500 Thomas #2 Memphis, TN 38107

**Unit Area:** 13,257 Square Feet Available

#### ● Exterior Walls:

Material: Masonry

#### ● Loading:

# Loading Docks - 2

# Drive-In Doors - 0

#### ● Floors:

Thickness: 5"  
Concrete

#### ● Clear Heights:

Min. Heights: 18'

#### ● Fire Suppression:

Type: Wet

#### ● Column Spacing:

Spacing: 40' x 40'

#### ● HVAC:

Type: GFU

#### ● Roofing System:

Material: Modified Bitumen  
Built up

#### ● Lighting:

Type: Fluorescent

#### ● Parking Area:

Available from Asset Management Services

#### ● Electrical:

Available from Asset Management Services



## North Memphis Industrial Park

Thomas Street @ Firestone · Memphis, TN 38107



### UNIT INFORMATION

**Unit ID:** E020

**Address:** 1500 Thomas #2 Memphis, TN 38107

**Unit Area:** 12,750 Square Feet Available

#### ● Exterior Walls:

Material: Masonry

#### ● Loading:

# Loading Docks - 0

# Drive-In Doors - 0

#### ● Floors:

Thickness: 5"  
Concrete

#### ● Clear Heights:

Min. Heights: 18'

#### ● Fire Suppression:

Type: Wet

#### ● Column Spacing:

Spacing: 40' x 40'

#### ● HVAC:

Type: GFU

#### ● Roofing System:

Material: Modified Bitumen  
Built up

#### ● Lighting:

Type: Fluorescent

#### ● Parking Area:

Available from Asset Management Services

#### ● Electrical:

Available from Asset Management Services



## North Memphis Industrial Park

Thomas Street @ Firestone · Memphis, TN 38107



### UNIT INFORMATION

**Unit ID:** F010

**Address:** 801 Royal Avenue Memphis, TN 38107

**Unit Area:** 1,800 Square Feet Available

#### ● Exterior Walls:

Material: Masonry

#### ● Loading:

# Loading Docks - 2  
9 x 9

# Drive-In Doors - 0

#### ● Floors:

Thickness: 5"  
Concrete

#### ● Clear Heights:

Min. Heights: 19'

#### ● Fire Suppression:

Available from Asset Management Services

#### ● Column Spacing:

Spacing: 25' x 25'

#### ● HVAC:

Type: GFU

#### ● Roofing System:

Material: Fiber  
Built up

#### ● Lighting:

Type: Fluorescent

#### ● Parking Area:

Available from Asset Management Services

#### ● Electrical:

Available from Asset Management Services



## North Memphis Industrial Park

Thomas Street @ Firestone · Memphis, TN 38107



### UNIT INFORMATION

**Unit ID:** H020

**Address:** 1432 Thomas Street Memphis, TN 38107

**Unit Area:** 12,408 Square Feet Available

#### ● Exterior Walls:

Material: Masonry

#### ● Loading:

# Loading Docks - 1  
12 x 14

# Drive-In Doors - 1  
8 x 9

#### ● Floors:

Thickness: 5"  
Concrete

#### ● Clear Heights:

Min. Heights: 18'

#### ● Fire Suppression:

Type: Dry

#### ● Column Spacing:

Spacing: 25' x 25'  
Steel

#### ● HVAC:

Available from Asset Management Services

#### ● Roofing System:

Material: Modified Bitumen  
Built up

#### ● Lighting:

Available from Asset Management Services

#### ● Parking Area:

Available from Asset Management Services

#### ● Electrical:

Available from Asset Management Services



## North Memphis Industrial Park

Thomas Street @ Firestone · Memphis, TN 38107



### UNIT INFORMATION

**Unit ID:** L010

**Address:** 655 Corrine Memphis, TN 38107

**Unit Area:** 5,000 Square Feet Available

#### ● Exterior Walls:

Material: Masonry

#### ● Loading:

# Loading Docks - 0

# Drive-In Doors - 5

8 x 9

#### ● Floors:

Thickness: 6"

Concrete

#### ● Clear Heights:

Min. Heights: 14'

#### ● Fire Suppression:

Type: Dry

#### ● Column Spacing:

Spacing: 50' x 50'

Steel

#### ● HVAC:

Type: GFU

#### ● Roofing System:

Material: Fiber

Built up

#### ● Lighting:

Type: Incandescent

#### ● Parking Area:

Available from Asset Management Services

#### ● Electrical:

Available from Asset Management Services



## North Memphis Industrial Park

Thomas Street @ Firestone · Memphis, TN 38107



### UNIT INFORMATION

**Unit ID:** L020

**Address:** 653 Corrine Memphis, TN 38107

**Unit Area:** 62,078 Square Feet Available

#### ● Exterior Walls:

Material: Masonry

#### ● Loading:

# Loading Docks - 1  
10 x 10

# Drive-In Doors - 13  
9 x 10

#### ● Floors:

Thickness: 6"  
Concrete

#### ● Clear Heights:

Min. Heights: 14'

#### ● Fire Suppression:

Type: Wet

#### ● Column Spacing:

Spacing: 50' x 50'  
Steel

#### ● HVAC:

Type: GFU

#### ● Roofing System:

Material: Modified Bitumen  
Built up

#### ● Lighting:

Type: Fluorescent

#### ● Parking Area:

Available from Asset Management Services

#### ● Electrical:

Available from Asset Management Services





## North Memphis Industrial Park

Thomas Street @ Firestone · Memphis, TN 38107



### UNIT INFORMATION

**Unit ID:** M010

**Address:** 730-750 Huron Memphis, TN 38107

**Unit Area:** 50,000 Square Feet Available

#### ● Exterior Walls:

Material: Masonry

#### ● Loading:

# Loading Docks - 2  
10 x 10

# Drive-In Doors - 6  
10 x 10

#### ● Floors:

Thickness: 5"  
Concrete

#### ● Clear Heights:

Min. Heights: 17'

#### ● Fire Suppression:

Type: Wet

#### ● Column Spacing:

Spacing: 30' x 30'  
Steel

#### ● HVAC:

Type: GFU

#### ● Roofing System:

Material: Fiber  
Built up

#### ● Lighting:

Type: Fluorescent

#### ● Parking Area:

Available from Asset Management Services

#### ● Electrical:

Available from Asset Management Services



## North Memphis Industrial Park

Thomas Street @ Firestone · Memphis, TN 38107



### UNIT INFORMATION

**Unit ID:** N010

**Address:** 700 Huron Memphis, TN 38107

**Unit Area:** 29,000 Square Feet Available

#### ● Exterior Walls:

Material: Masonry

#### ● Loading:

# Loading Docks - 1  
10 x 10

# Drive-In Doors - 5  
10 x 10

#### ● Floors:

Thickness: 5"  
Concrete

#### ● Clear Heights:

Min. Heights: 12' 6"

#### ● Fire Suppression:

Type: Wet

#### ● Column Spacing:

Spacing: 30' x 30'  
Steel

#### ● HVAC:

Type: GFU

#### ● Roofing System:

Material: Fiber  
Built up

#### ● Lighting:

Type: Fluorescent

#### ● Parking Area:

Available from Asset Management Services

#### ● Electrical:

Available from Asset Management Services



## North Memphis Industrial Park

Thomas Street @ Firestone · Memphis, TN 38107



### UNIT INFORMATION

**Unit ID:** S010

**Address:** 700 Firestone Blvd. Memphis, TN 38107

**Unit Area:** 66,726 Square Feet Available

#### ● Exterior Walls:

Material: Masonry

#### ● Loading:

# Loading Docks - 0

# Drive-In Doors - 5

10 x 12

#### ● Floors:

Thickness: 6"

Concrete

#### ● Clear Heights:

Min. Heights: 19'

#### ● Fire Suppression:

Type: Wet

.25/2000 sq. ft.

#### ● Column Spacing:

Spacing: 40' x 40'

Steel

#### ● HVAC:

Type: GFU

#### ● Roofing System:

Material: Modified Bitumen

Built up

#### ● Lighting:

Type: Fluorescent

#### ● Parking Area:

Available from Asset Management Services

#### ● Electrical:

Available from Asset Management Services