





# Shelby Oaks Industrial

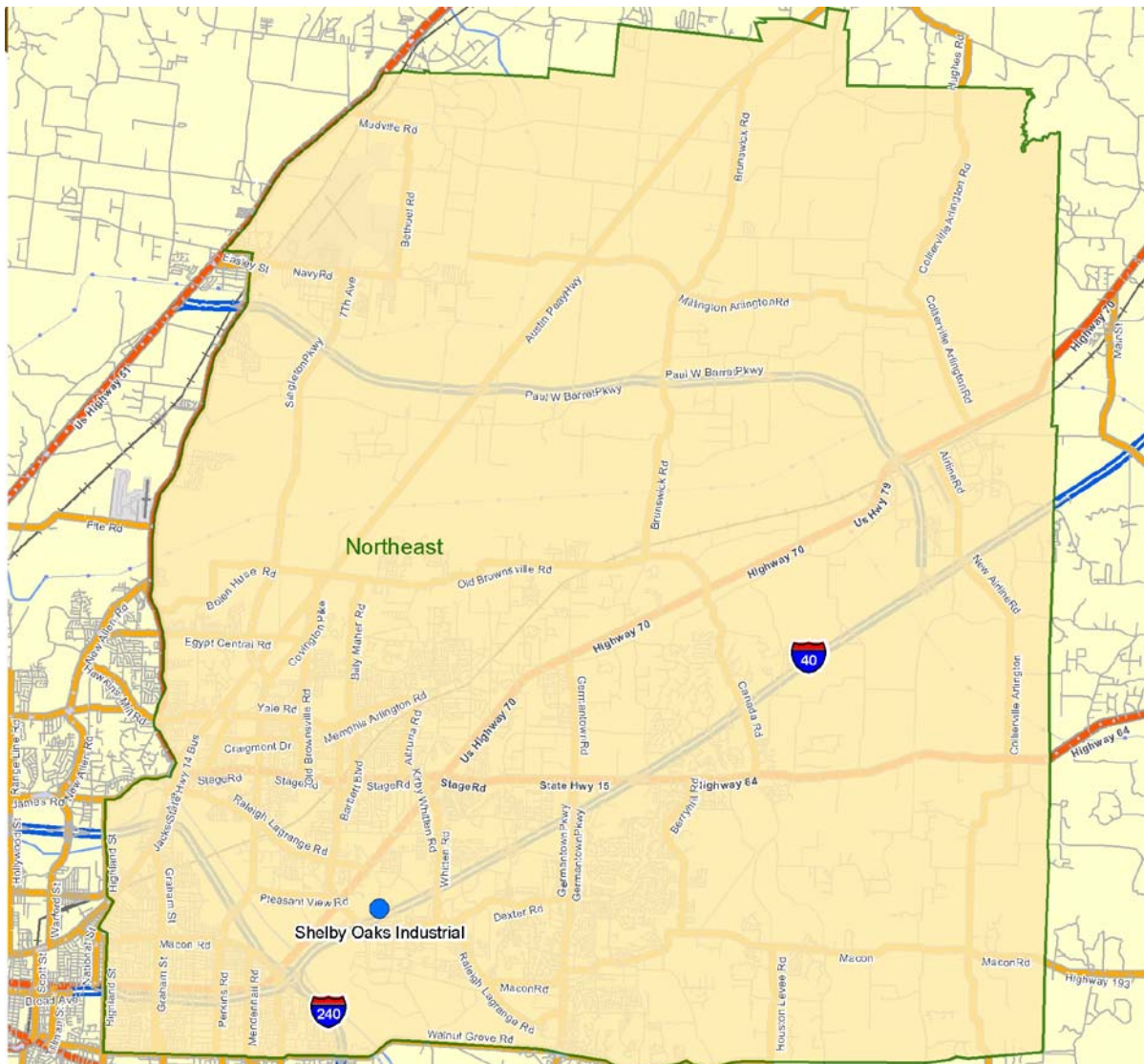
Shelby Oaks Drive @ Sycamore View · Memphis, TN 38134



## SubMarket Information

MEMPHIS · NORTHEAST · INDUSTRIAL

Includes all properties east of Highland and East Parkway and north of Union Avenue and Walnut Grove Road, extending to the northern and eastern Shelby County borders.





## Shelby Oaks Industrial

Shelby Oaks Drive @ Sycamore View · Memphis, TN 38134



### Available Units

<b>BUILDING</b>	<b>UNIT</b>	<b>TOTAL RENTABLE</b>	<b>USE TYPE</b>
1801 Shelby Oaks Dr. #2-6	B035	7,500 ( SF )	INDUSTRIAL
1725 Shelby Oaks Dr. N.	C020	11,986 ( SF )	INDUSTRIAL
1725 Shelby Oaks Dr. N.	C015	6,070 ( SF )	INDUSTRIAL
1691 Shelby Oaks Dr. N.#3	F020	1,875 ( SF )	INDUSTRIAL
1679 Shelby Oaks Dr. N. #2	H020	1,875 ( SF )	INDUSTRIAL
1683 Shelby Oaks Dr. N. #4	I030	1,860 ( SF )	INDUSTRIAL
1683 Shelby Oaks Dr. N. 5	I040	1,500 ( SF )	INDUSTRIAL
1694 Shelby Oaks Dr.	L010	6,128 ( SF )	INDUSTRIAL
1672-76 Shelby Oaks Dr.	M020	3,750 ( SF )	INDUSTRIAL
1662-70 Shelby Oaks Dr.	M030	3,750 ( SF )	INDUSTRIAL
1682 Shelby Oaks #15-16	N020	3,750 ( SF )	INDUSTRIAL
1682 Shelby Oaks #14	N030	2,500 ( SF )	INDUSTRIAL
1682 Shelby Oaks #13	N040	1,250 ( SF )	INDUSTRIAL
1682 Shelby Oaks #5	N090	1,875 ( SF )	INDUSTRIAL
1682 Shelby Oaks #7	N065	1,875 ( SF )	INDUSTRIAL
1682 Shelby Oaks #17-18	N015	940 ( SF )	INDUSTRIAL
1710 Shelby Oaks N. #21-22	O060	7,500 ( SF )	INDUSTRIAL
1710 Shelby Oaks N. #20	O050	11,250 ( SF )	INDUSTRIAL
1716 Shelby Oaks #2	P090	7,500 ( SF )	INDUSTRIAL
1716 Shelby Oaks #1	P100	7,500 ( SF )	INDUSTRIAL
1716 Shelby Oaks #12	P020	15,000 ( SF )	INDUSTRIAL
1650 Shelby Oaks #1-2	Q070	6,310 ( SF )	INDUSTRIAL
1656 Shelby Oaks #1-7	R040	26,164 ( SF )	INDUSTRIAL
6400 Shelby View #110	S050	10,000 ( SF )	INDUSTRIAL
6400 Shelby View #112	S070	15,000 ( SF )	INDUSTRIAL
6400 Shelby View #101-105	S075	25,000 ( SF )	INDUSTRIAL
6399 Shelby View #115	T070	10,000 ( SF )	INDUSTRIAL
6399 Shelby View, ste 112-114	T050	30,000 ( SF )	INDUSTRIAL
1657 Shelby Oaks #107	U060	1,875 ( SF )	INDUSTRIAL
1661 Shelby Oaks 108-109	V005	3,750 ( SF )	INDUSTRIAL
1661 Shelby Oaks 108-109	V010	2,500 ( SF )	INDUSTRIAL
1661 Shelby Oaks Drive North	V015	1,250 ( SF )	INDUSTRIAL
6423 Shelby View #105	Y050	10,000 ( SF )	INDUSTRIAL
6423 Shelby View #104	Y060	10,000 ( SF )	INDUSTRIAL



## Shelby Oaks Industrial

Shelby Oaks Drive @ Sycamore View · Memphis, TN 38134



### UNIT INFORMATION

**Unit ID:** B035

**Address:** 1801 Shelby Oaks Dr. #2-6 Memphis, TN 38134

**Unit Area:** 7,500 Square Feet Available

#### ● **Exterior Walls:**

Available from Asset Management Services

#### ● **Loading:**

Available from Asset Management Services

Available from Asset Management Services

#### ● **Floors:**

Available from Asset Management Services

#### ● **Clear Heights:**

Available from Asset Management Services

#### ● **Fire Suppression:**

Available from Asset Management Services

#### ● **Column Spacing:**

Available from Asset Management Services

#### ● **HVAC:**

Available from Asset Management Services

#### ● **Roofing System:**

Available from Asset Management Services

#### ● **Lighting:**

Available from Asset Management Services

#### ● **Parking Area:**

Available from Asset Management Services

#### ● **Electrical:**

Available from Asset Management Services



## Shelby Oaks Industrial

Shelby Oaks Drive @ Sycamore View · Memphis, TN 38134



### UNIT INFORMATION

**Unit ID:** C020

**Address:** 1725 Shelby Oaks Dr. N. Memphis, TN 38134

**Unit Area:** 11,986 Square Feet Available

#### ● Exterior Walls:

Material: Concrete  
Tilt Up

#### ● Loading:

# Loading Docks - 0

# Drive-In Doors - 0

#### ● Floors:

Thickness: 6"

#### ● Clear Heights:

Min. Heights: 16'

#### ● Fire Suppression:

Type: Wet

#### ● Column Spacing:

Spacing: 50' x 50'

#### ● HVAC:

Type: RTU

#### ● Roofing System:

Material: Fiberglass  
Built up

#### ● Lighting:

Type: Fluorescent

#### ● Parking Area:

Available from Asset Management Services

#### ● Electrical:

Available from Asset Management Services



## Shelby Oaks Industrial

Shelby Oaks Drive @ Sycamore View · Memphis, TN 38134



### UNIT INFORMATION

**Unit ID:** C015

**Address:** 1725 Shelby Oaks Dr. N. Memphis, TN 38134

**Unit Area:** 6,070 Square Feet Available

#### ● **Exterior Walls:**

Available from Asset Management Services

#### ● **Loading:**

Available from Asset Management Services

Available from Asset Management Services

#### ● **Floors:**

Available from Asset Management Services

#### ● **Clear Heights:**

Available from Asset Management Services

#### ● **Fire Suppression:**

Available from Asset Management Services

#### ● **Column Spacing:**

Available from Asset Management Services

#### ● **HVAC:**

Available from Asset Management Services

#### ● **Roofing System:**

Available from Asset Management Services

#### ● **Lighting:**

Available from Asset Management Services

#### ● **Parking Area:**

Available from Asset Management Services

#### ● **Electrical:**

Available from Asset Management Services



## Shelby Oaks Industrial

Shelby Oaks Drive @ Sycamore View · Memphis, TN 38134



### UNIT INFORMATION

**Unit ID:** F020

**Address:** 1691 Shelby Oaks Dr. N.#3 Memphis, TN 38134

**Unit Area:** 1,875 Square Feet Available

#### ● Exterior Walls:

Min. Width :  
Min. Height:  
Material: Concrete  
Tilt Up

#### ● Loading:

# Loading Docks - 0

# Drive-In Doors - 1

#### ● Floors:

Thickness: 0"

#### ● Clear Heights:

Min. Heights: 13'

#### ● Fire Suppression:

Type: Dry

#### ● Column Spacing:

Spacing: 25' x 25'  
24'6"

#### ● HVAC:

Type: Split System

#### ● Roofing System:

Material: Fiberglass  
Built up

#### ● Lighting:

Type: Fluorescent

#### ● Parking Area:

Available from Asset Management Services

#### ● Electrical:

Available from Asset Management Services



## Shelby Oaks Industrial

Shelby Oaks Drive @ Sycamore View · Memphis, TN 38134



### UNIT INFORMATION

**Unit ID:** H020

**Address:** 1679 Shelby Oaks Dr. N. #2 Memphis, TN 38134

**Unit Area:** 1,875 Square Feet Available

#### ● Exterior Walls:

Material: Concrete  
Tilt Up

#### ● Loading:

# Loading Docks - 1

# Drive-In Doors - 0

#### ● Floors:

Available from Asset Management Services

#### ● Clear Heights:

Min. Heights: 14'

#### ● Fire Suppression:

Type: Dry

#### ● Column Spacing:

Spacing: 25' x 25'

#### ● HVAC:

Type: Split System

#### ● Roofing System:

Material: Fiberglass  
Built up

#### ● Lighting:

Type: Fluorescent

#### ● Parking Area:

Available from Asset Management Services

#### ● Electrical:

Available from Asset Management Services





## Shelby Oaks Industrial

Shelby Oaks Drive @ Sycamore View · Memphis, TN 38134



### UNIT INFORMATION

**Unit ID:** I030

**Address:** 1683 Shelby Oaks Dr. N. #4 Memphis, TN 38134

**Unit Area:** 1,860 Square Feet Available

#### ● Exterior Walls:

Material: Concrete  
Tilt Up

#### ● Loading:

# Loading Docks - 2

# Drive-In Doors - 0

#### ● Floors:

Available from Asset Management Services

#### ● Clear Heights:

Min. Heights: 14'

#### ● Fire Suppression:

Type: Dry

#### ● Column Spacing:

Spacing: 25' x 25'

#### ● HVAC:

Available from Asset Management Services

#### ● Roofing System:

Material: Fiberglass  
Built up

#### ● Lighting:

Type: Fluorescent

#### ● Parking Area:

Available from Asset Management Services

#### ● Electrical:

Available from Asset Management Services



## Shelby Oaks Industrial

Shelby Oaks Drive @ Sycamore View · Memphis, TN 38134



### UNIT INFORMATION

**Unit ID:** I040

**Address:** 1683 Shelby Oaks Dr. N. 5 Memphis, TN 38134

**Unit Area:** 1,500 Square Feet Available

#### ● Exterior Walls:

Material: Concrete  
Tilt Up

#### ● Loading:

# Loading Docks - 1

# Drive-In Doors - 0

#### ● Floors:

Available from Asset Management Services

#### ● Clear Heights:

Min. Heights: 14'

#### ● Fire Suppression:

Type: Dry

#### ● Column Spacing:

Spacing: 25' x 25'

#### ● HVAC:

Available from Asset Management Services

#### ● Roofing System:

Material: Fiberglass  
Built up

#### ● Lighting:

Type: Fluorescent

#### ● Parking Area:

Available from Asset Management Services

#### ● Electrical:

Available from Asset Management Services



## Shelby Oaks Industrial

Shelby Oaks Drive @ Sycamore View · Memphis, TN 38134



### UNIT INFORMATION

**Unit ID:** L010

**Address:** 1694 Shelby Oaks Dr. Memphis, TN 38134

**Unit Area:** 6,128 Square Feet Available

#### ● Exterior Walls:

Material: Concrete  
Tilt Up

#### ● Loading:

# Loading Docks - 1

# Drive-In Doors - 0

#### ● Floors:

Available from Asset Management Services

#### ● Clear Heights:

Min. Heights: 14'

#### ● Fire Suppression:

Type: Dry

#### ● Column Spacing:

Spacing: 25' x 25'

#### ● HVAC:

Type: Split System

#### ● Roofing System:

Material: Fiberglass  
Built up

#### ● Lighting:

Type: Fluorescent

#### ● Parking Area:

Available from Asset Management Services

#### ● Electrical:

Available from Asset Management Services



## Shelby Oaks Industrial

Shelby Oaks Drive @ Sycamore View · Memphis, TN 38134



### UNIT INFORMATION

**Unit ID:** M020

**Address:** 1672-76 Shelby Oaks Dr. Memphis, TN 38134

**Unit Area:** 3,750 Square Feet Available

#### ● Exterior Walls:

Material: Concrete  
Tilt Up

#### ● Loading:

# Loading Docks - 0

# Drive-In Doors - 0

#### ● Floors:

Available from Asset Management Services

#### ● Clear Heights:

Available from Asset Management Services

#### ● Fire Suppression:

Type: Dry

#### ● Column Spacing:

Spacing: 25' x 25'

#### ● HVAC:

Type: Split System

#### ● Roofing System:

Material: Fiberglass  
Built up

#### ● Lighting:

Type: Fluorescent

#### ● Parking Area:

Available from Asset Management Services

#### ● Electrical:

Available from Asset Management Services



## Shelby Oaks Industrial

Shelby Oaks Drive @ Sycamore View · Memphis, TN 38134



### UNIT INFORMATION

**Unit ID:** M030

**Address:** 1662-70 Shelby Oaks Dr. Memphis, TN 38134

**Unit Area:** 3,750 Square Feet Available

#### ● Exterior Walls:

Min. Width :  
Min. Height:  
Material: Concrete  
Tilt Up

#### ● Loading:

# Loading Docks - 0

# Drive-In Doors - 1

#### ● Floors:

Thickness: 0"

#### ● Clear Heights:

Min. Heights: 13' 3"

#### ● Fire Suppression:

Type: Dry

#### ● Column Spacing:

Spacing: 25' x 25'

#### ● HVAC:

Type: Split System

#### ● Roofing System:

Material: Fiberglass  
Built up

#### ● Lighting:

Type: Fluorescent

#### ● Parking Area:

Available from Asset Management Services

#### ● Electrical:

Available from Asset Management Services



## Shelby Oaks Industrial

Shelby Oaks Drive @ Sycamore View · Memphis, TN 38134



### UNIT INFORMATION

**Unit ID:** N020

**Address:** 1682 Shelby Oaks #15-16 Memphis, TN 38134

**Unit Area:** 3,750 Square Feet Available

#### ● Exterior Walls:

Material: Concrete  
Tilt Up

#### ● Loading:

# Loading Docks - 0

# Drive-In Doors - 1

#### ● Floors:

Available from Asset Management Services

#### ● Clear Heights:

Min. Heights: 14'

#### ● Fire Suppression:

Type: Dry

#### ● Column Spacing:

Spacing: 25' x 25'

#### ● HVAC:

Available from Asset Management Services

#### ● Roofing System:

Material: Fiberglass  
Built up

#### ● Lighting:

Type: Fluorescent

#### ● Parking Area:

Available from Asset Management Services

#### ● Electrical:

Available from Asset Management Services



## Shelby Oaks Industrial

Shelby Oaks Drive @ Sycamore View · Memphis, TN 38134



### UNIT INFORMATION

**Unit ID:** N030

**Address:** 1682 Shelby Oaks #14 Memphis, TN 38134

**Unit Area:** 2,500 Square Feet Available

#### ● Exterior Walls:

Min. Width :  
Min. Height:  
Material: Concrete  
Tilt Up

#### ● Loading:

# Loading Docks - 0

# Drive-In Doors - 1

#### ● Floors:

Thickness: 0"

#### ● Clear Heights:

Min. Heights: 13'  
Partial Drop Ceiling

#### ● Fire Suppression:

Type: Dry

#### ● Column Spacing:

Spacing: 25' x 25'

#### ● HVAC:

Type: Split System

#### ● Roofing System:

Material: Fiberglass  
Built up

#### ● Lighting:

Type: Fluorescent

#### ● Parking Area:

Available from Asset Management Services

#### ● Electrical:

Available from Asset Management Services



## Shelby Oaks Industrial

Shelby Oaks Drive @ Sycamore View · Memphis, TN 38134



### UNIT INFORMATION

**Unit ID:** N040

**Address:** 1682 Shelby Oaks #13 Memphis, TN 38134

**Unit Area:** 1,250 Square Feet Available

#### ● Exterior Walls:

Material: Concrete  
Tilt Up

#### ● Loading:

# Loading Docks - 0

# Drive-In Doors - 1

#### ● Floors:

Available from Asset Management Services

#### ● Clear Heights:

Min. Heights: 14'

#### ● Fire Suppression:

Type: Dry

#### ● Column Spacing:

Spacing: 25' x 25'

#### ● HVAC:

Type: Split System

#### ● Roofing System:

Material: Fiberglass  
Built up

#### ● Lighting:

Type: Fluorescent

#### ● Parking Area:

Available from Asset Management Services

#### ● Electrical:

Available from Asset Management Services





## Shelby Oaks Industrial

Shelby Oaks Drive @ Sycamore View · Memphis, TN 38134



### UNIT INFORMATION

**Unit ID:** N090

**Address:** 1682 Shelby Oaks #5 Memphis, TN 38134

**Unit Area:** 1,875 Square Feet Available

#### ● Exterior Walls:

Material: Concrete  
Tilt Up

#### ● Loading:

# Loading Docks - 0

# Drive-In Doors - 1

#### ● Floors:

Available from Asset Management Services

#### ● Clear Heights:

Min. Heights: 14'

#### ● Fire Suppression:

Type: Dry

#### ● Column Spacing:

Spacing: 25' x 25'

#### ● HVAC:

Type: Split System

#### ● Roofing System:

Material: Fiberglass  
Built up

#### ● Lighting:

Type: Fluorescent

#### ● Parking Area:

Available from Asset Management Services

#### ● Electrical:

Available from Asset Management Services



## Shelby Oaks Industrial

Shelby Oaks Drive @ Sycamore View · Memphis, TN 38134



### UNIT INFORMATION

**Unit ID:** N065

**Address:** 1682 Shelby Oaks #7 Memphis, TN 38134

**Unit Area:** 1,875 Square Feet Available

#### ● Exterior Walls:

Material: Concrete  
Tilt Up

#### ● Loading:

# Loading Docks - 0

# Drive-In Doors - 1

#### ● Floors:

Available from Asset Management Services

#### ● Clear Heights:

Min. Heights: 14'

#### ● Fire Suppression:

Type: Dry

#### ● Column Spacing:

Spacing: 25' x 25'

#### ● HVAC:

Type: Split System

#### ● Roofing System:

Material: Fiberglass  
Built up

#### ● Lighting:

Type: Fluorescent

#### ● Parking Area:

Available from Asset Management Services

#### ● Electrical:

Available from Asset Management Services



## Shelby Oaks Industrial

Shelby Oaks Drive @ Sycamore View · Memphis, TN 38134



### UNIT INFORMATION

**Unit ID:** N015

**Address:** 1682 Shelby Oaks #17-18 Memphis, TN 38134

**Unit Area:** 940 Square Feet Available

#### ● **Exterior Walls:**

Available from Asset Management Services

#### ● **Loading:**

Available from Asset Management Services

Available from Asset Management Services

#### ● **Floors:**

Available from Asset Management Services

#### ● **Clear Heights:**

Available from Asset Management Services

#### ● **Fire Suppression:**

Available from Asset Management Services

#### ● **Column Spacing:**

Available from Asset Management Services

#### ● **HVAC:**

Available from Asset Management Services

#### ● **Roofing System:**

Available from Asset Management Services

#### ● **Lighting:**

Available from Asset Management Services

#### ● **Parking Area:**

Available from Asset Management Services

#### ● **Electrical:**

Available from Asset Management Services



## Shelby Oaks Industrial

Shelby Oaks Drive @ Sycamore View · Memphis, TN 38134



### UNIT INFORMATION

**Unit ID:** O060

**Address:** 1710 Shelby Oaks N. #21-22 Memphis, TN 38134

**Unit Area:** 7,500 Square Feet Available

#### ● Exterior Walls:

Material: Concrete  
Tilt Up

#### ● Loading:

# Loading Docks - 0  
  
# Drive-In Doors - 19

#### ● Floors:

Thickness: 6"

#### ● Clear Heights:

Min. Heights: 22'

#### ● Fire Suppression:

Type: Dry

#### ● Column Spacing:

Spacing: 50' x 50'

#### ● HVAC:

Type: GFU

#### ● Roofing System:

Material: Fiberglass  
Built up

#### ● Lighting:

Type: Metal Halide

#### ● Parking Area:

Available from Asset Management Services

#### ● Electrical:

Available from Asset Management Services



## Shelby Oaks Industrial

Shelby Oaks Drive @ Sycamore View · Memphis, TN 38134



### UNIT INFORMATION

**Unit ID:** O050

**Address:** 1710 Shelby Oaks N. #20 Memphis, TN 38134

**Unit Area:** 11,250 Square Feet Available

#### ● Exterior Walls:

Material: Concrete  
Tilt Up

#### ● Loading:

# Loading Docks - 0  
  
# Drive-In Doors - 19

#### ● Floors:

Thickness: 6"

#### ● Clear Heights:

Min. Heights: 22'

#### ● Fire Suppression:

Type: Dry

#### ● Column Spacing:

Spacing: 50' x 50'

#### ● HVAC:

Type: GFU

#### ● Roofing System:

Material: Fiberglass  
Built up

#### ● Lighting:

Type: Metal Halide

#### ● Parking Area:

Available from Asset Management Services

#### ● Electrical:

Available from Asset Management Services



## Shelby Oaks Industrial

Shelby Oaks Drive @ Sycamore View · Memphis, TN 38134



### UNIT INFORMATION

**Unit ID:** P090

**Address:** 1716 Shelby Oaks #2 Memphis, TN 38134

**Unit Area:** 7,500 Square Feet Available

#### ● Exterior Walls:

Material: Concrete  
Tilt Up

#### ● Loading:

# Loading Docks - 0

# Drive-In Doors - 4

#### ● Floors:

Thickness: 5"

#### ● Clear Heights:

Min. Heights: 22'

#### ● Fire Suppression:

Type: Dry

#### ● Column Spacing:

Spacing: 50' x 50'

#### ● HVAC:

Type: GFU

#### ● Roofing System:

Material: Modified Bitumen  
Built up

#### ● Lighting:

Type: Metal Halide

#### ● Parking Area:

Available from Asset Management Services

#### ● Electrical:

Available from Asset Management Services



## Shelby Oaks Industrial

Shelby Oaks Drive @ Sycamore View · Memphis, TN 38134



### UNIT INFORMATION

**Unit ID:** P100

**Address:** 1716 Shelby Oaks #1 Memphis, TN 38134

**Unit Area:** 7,500 Square Feet Available

#### ● Exterior Walls:

Material: Concrete  
Tilt Up

#### ● Loading:

# Loading Docks - 0

# Drive-In Doors - 4

#### ● Floors:

Thickness: 5"

#### ● Clear Heights:

Min. Heights: 22'

#### ● Fire Suppression:

Type: Dry

#### ● Column Spacing:

Spacing: 50' x 50'

#### ● HVAC:

Type: GFU

#### ● Roofing System:

Material: Modified Bitumen  
Built up

#### ● Lighting:

Type: Metal Halide

#### ● Parking Area:

Available from Asset Management Services

#### ● Electrical:

Available from Asset Management Services



## Shelby Oaks Industrial

Shelby Oaks Drive @ Sycamore View · Memphis, TN 38134



### UNIT INFORMATION

**Unit ID:** P020

**Address:** 1716 Shelby Oaks #12 Memphis, TN 38134

**Unit Area:** 15,000 Square Feet Available

#### ● **Exterior Walls:**

Available from Asset Management Services

#### ● **Loading:**

Available from Asset Management Services

Available from Asset Management Services

#### ● **Floors:**

Available from Asset Management Services

#### ● **Clear Heights:**

Available from Asset Management Services

#### ● **Fire Suppression:**

Available from Asset Management Services

#### ● **Column Spacing:**

Available from Asset Management Services

#### ● **HVAC:**

Available from Asset Management Services

#### ● **Roofing System:**

Available from Asset Management Services

#### ● **Lighting:**

Available from Asset Management Services

#### ● **Parking Area:**

Available from Asset Management Services

#### ● **Electrical:**

Available from Asset Management Services





## Shelby Oaks Industrial

Shelby Oaks Drive @ Sycamore View · Memphis, TN 38134



### UNIT INFORMATION

**Unit ID:** Q070

**Address:** 1650 Shelby Oaks #1-2 Memphis, TN 38134

**Unit Area:** 6,310 Square Feet Available

#### ● Exterior Walls:

Material: Concrete  
Tilt Up

#### ● Loading:

# Loading Docks - 1

# Drive-In Doors - 2

#### ● Floors:

Thickness: 6"

#### ● Clear Heights:

Min. Heights: 22'

#### ● Fire Suppression:

Type: Dry

#### ● Column Spacing:

Spacing: 50' x 50'

#### ● HVAC:

Type: GFU

#### ● Roofing System:

Material: Fiberglass  
Built up

#### ● Lighting:

Type: Metal Halide

#### ● Parking Area:

Available from Asset Management Services

#### ● Electrical:

Available from Asset Management Services



## Shelby Oaks Industrial

Shelby Oaks Drive @ Sycamore View · Memphis, TN 38134



### UNIT INFORMATION

**Unit ID:** R040

**Address:** 1656 Shelby Oaks #1-7 Memphis, TN 38134

**Unit Area:** 26,164 Square Feet Available

#### ● Exterior Walls:

Material: Concrete  
Tilt Up

#### ● Loading:

Available from Asset Management Services  
Available from Asset Management Services

#### ● Floors:

Thickness: 6"

#### ● Clear Heights:

Min. Heights: 22'

#### ● Fire Suppression:

Type: Dry

#### ● Column Spacing:

Spacing: 50' x 50'

#### ● HVAC:

Type: GFU

#### ● Roofing System:

Material: Fiberglass  
Built up

#### ● Lighting:

Type: Metal Halide

#### ● Parking Area:

Available from Asset Management Services

#### ● Electrical:

Available from Asset Management Services



## Shelby Oaks Industrial

Shelby Oaks Drive @ Sycamore View · Memphis, TN 38134



### UNIT INFORMATION

**Unit ID:** S050

**Address:** 6400 Shelby View #110 Memphis, TN 38134

**Unit Area:** 10,000 Square Feet Available

#### ● Exterior Walls:

Min. Height: 30'  
Material: Concrete  
Tilt Up

#### ● Loading:

# Loading Docks - 0

# Drive-In Doors - 6  
8x10 OH Doors

#### ● Floors:

Thickness: 6"  
4000 psi

#### ● Clear Heights:

Min. Heights: 26'

#### ● Fire Suppression:

Type: Wet  
ESFR w/500 GPM Fire Pumps

#### ● Column Spacing:

Spacing: 50' x 50'  
50' x 50' Byas

#### ● HVAC:

Type: GFU

#### ● Roofing System:

Material: Fiberglass  
Built up

#### ● Lighting:

Type: Metal Halide

#### ● Parking Area:

Available from Asset Management Services

#### ● Electrical:

Available from Asset Management Services



## Shelby Oaks Industrial

Shelby Oaks Drive @ Sycamore View · Memphis, TN 38134



### UNIT INFORMATION

**Unit ID:** S070

**Address:** 6400 Shelby View #112 Memphis, TN 38134

**Unit Area:** 15,000 Square Feet Available

#### ● Exterior Walls:

Min. Width :

Min. Height:

Material: Concrete Tilt Up

#### ● Loading:

# Loading Docks - 3

4'

# Drive-In Doors - 0

#### ● Floors:

Thickness: 6"

#### ● Clear Heights:

Min. Heights: 28'

#### ● Fire Suppression:

Type: Wet

ESFR w/500 GPM Fire Pumps

#### ● Column Spacing:

Spacing: 50' x 50'

#### ● HVAC:

Type: GFU

#### ● Roofing System:

Material: Fiberglass

Built up

#### ● Lighting:

Type: Metal Halide

#### ● Parking Area:

Available from Asset Management Services

#### ● Electrical:

Available from Asset Management Services



## Shelby Oaks Industrial

Shelby Oaks Drive @ Sycamore View · Memphis, TN 38134



### UNIT INFORMATION

**Unit ID:** S075

**Address:** 6400 Shelby View #101-105 Memphis, TN 38134

**Unit Area:** 25,000 Square Feet Available

#### ● Exterior Walls:

Min. Width :  
Min. Height:  
Material: Concrete  
Tilt up

#### ● Loading:

# Loading Docks - 3  
4'3"  
  
# Drive-In Doors - 0

#### ● Floors:

Thickness: 0"

#### ● Clear Heights:

Min. Heights: 28'

#### ● Fire Suppression:

Type:  
Density:0

#### ● Column Spacing:

Spacing: 50' x 50'

#### ● HVAC:

Type:  
Tonnage:0

#### ● Roofing System:

Material: Fiberglass

#### ● Lighting:

Type: Metal Halide

#### ● Parking Area:

Available from Asset Management Services

#### ● Electrical:

Min. Capacity: 0  
Min. Voltage:  
Phase: 0



## Shelby Oaks Industrial

Shelby Oaks Drive @ Sycamore View · Memphis, TN 38134



### UNIT INFORMATION

**Unit ID:** T070

**Address:** 6399 Shelby View #115 Memphis, TN 38134

**Unit Area:** 10,000 Square Feet Available

#### ● Exterior Walls:

Material: Concrete  
Tilt Up

#### ● Loading:

Available from Asset Management Services  
# Drive-In Doors - 32

#### ● Floors:

Thickness: 6"

#### ● Clear Heights:

Min. Heights: 26'

#### ● Fire Suppression:

Type: Wet  
ESFR w/500 GPM Fire Pumps

#### ● Column Spacing:

Spacing: 50' x 50'

#### ● HVAC:

Type: GFU

#### ● Roofing System:

Material: Modified Bitumen  
Built up

#### ● Lighting:

Available from Asset Management Services

#### ● Parking Area:

Available from Asset Management Services

#### ● Electrical:

Available from Asset Management Services



## Shelby Oaks Industrial

Shelby Oaks Drive @ Sycamore View · Memphis, TN 38134



### UNIT INFORMATION

**Unit ID:** T050

**Address:** 6399 Shelby View, ste 112-114 Memphis, TN 38134

**Unit Area:** 30,000 Square Feet Available

#### ● Exterior Walls:

Material: Concrete  
Tilt Up

#### ● Loading:

Available from Asset Management Services  
# Drive-In Doors - 32

#### ● Floors:

Thickness: 6"

#### ● Clear Heights:

Min. Heights: 26'

#### ● Fire Suppression:

Type: Wet  
ESFR w/500 GPM Fire Pumps

#### ● Column Spacing:

Spacing: 50' x 50'

#### ● HVAC:

Type: GFU

#### ● Roofing System:

Material: Fiberglass  
Built up

#### ● Lighting:

Available from Asset Management Services

#### ● Parking Area:

Available from Asset Management Services

#### ● Electrical:

Available from Asset Management Services



## Shelby Oaks Industrial

Shelby Oaks Drive @ Sycamore View · Memphis, TN 38134



### UNIT INFORMATION

**Unit ID:** U060

**Address:** 1657 Shelby Oaks #107 Memphis, TN 38134

**Unit Area:** 1,875 Square Feet Available

#### ● Exterior Walls:

Material: Concrete  
Tilt Up

#### ● Loading:

# Loading Docks - 1  
0

# Drive-In Doors - 0

#### ● Floors:

Available from Asset Management Services

#### ● Clear Heights:

Min. Heights: 14'

#### ● Fire Suppression:

Type: Dry

#### ● Column Spacing:

Spacing: 25' x 25'

#### ● HVAC:

Available from Asset Management Services

#### ● Roofing System:

Material: Modified Bitumen

#### ● Lighting:

Type: Fluorescent

#### ● Parking Area:

Available from Asset Management Services

#### ● Electrical:

Available from Asset Management Services





## Shelby Oaks Industrial

Shelby Oaks Drive @ Sycamore View · Memphis, TN 38134



### UNIT INFORMATION

**Unit ID:** V005

**Address:** 1661 Shelby Oaks 108-109 Memphis, TN 38134

**Unit Area:** 3,750 Square Feet Available

#### ● Exterior Walls:

Material: Concrete  
Tilt Up

#### ● Loading:

# Loading Docks - 2  
0

# Drive-In Doors - 0

#### ● Floors:

Available from Asset Management Services

#### ● Clear Heights:

Min. Heights: 15'

#### ● Fire Suppression:

Type: Dry

#### ● Column Spacing:

Spacing: 25' x 25'

#### ● HVAC:

Available from Asset Management Services

#### ● Roofing System:

Material: Modified Bitumen

#### ● Lighting:

Type: Fluorescent

#### ● Parking Area:

Available from Asset Management Services

#### ● Electrical:

Available from Asset Management Services



## Shelby Oaks Industrial

Shelby Oaks Drive @ Sycamore View · Memphis, TN 38134



### UNIT INFORMATION

**Unit ID:** V010

**Address:** 1661 Shelby Oaks 108-109 Memphis, TN 38134

**Unit Area:** 2,500 Square Feet Available

#### ● Exterior Walls:

Material: Concrete  
Tilt Up

#### ● Loading:

# Loading Docks - 2  
0

# Drive-In Doors - 0

#### ● Floors:

Available from Asset Management Services

#### ● Clear Heights:

Min. Heights: 15'

#### ● Fire Suppression:

Type: Dry

#### ● Column Spacing:

Spacing: 25' x 25'

#### ● HVAC:

Available from Asset Management Services

#### ● Roofing System:

Material: Modified Bitumen

#### ● Lighting:

Type: Fluorescent

#### ● Parking Area:

Available from Asset Management Services

#### ● Electrical:

Available from Asset Management Services



## Shelby Oaks Industrial

Shelby Oaks Drive @ Sycamore View · Memphis, TN 38134



### UNIT INFORMATION

**Unit ID:** V015

**Address:** 1661 Shelby Oaks Drive North Memphis, TN 38134

**Unit Area:** 1,250 Square Feet Available

#### ● **Exterior Walls:**

Available from Asset Management Services

#### ● **Loading:**

Available from Asset Management Services

Available from Asset Management Services

#### ● **Floors:**

Available from Asset Management Services

#### ● **Clear Heights:**

Available from Asset Management Services

#### ● **Fire Suppression:**

Available from Asset Management Services

#### ● **Column Spacing:**

Available from Asset Management Services

#### ● **HVAC:**

Available from Asset Management Services

#### ● **Roofing System:**

Available from Asset Management Services

#### ● **Lighting:**

Available from Asset Management Services

#### ● **Parking Area:**

Available from Asset Management Services

#### ● **Electrical:**

Available from Asset Management Services



## Shelby Oaks Industrial

Shelby Oaks Drive @ Sycamore View · Memphis, TN 38134



### UNIT INFORMATION

**Unit ID:** Y050

**Address:** 6423 Shelby View #105 Memphis, TN 38134

**Unit Area:** 10,000 Square Feet Available

#### ● Exterior Walls:

Material: Concrete  
Tilt Up

#### ● Loading:

Available from Asset Management Services  
# Drive-In Doors - 12

#### ● Floors:

Thickness: 6"

#### ● Clear Heights:

Min. Heights: 26'

#### ● Fire Suppression:

Type: Wet  
ESFR w/500 GPM Fire Pumps

#### ● Column Spacing:

Spacing: 50' x 50'

#### ● HVAC:

Available from Asset Management Services

#### ● Roofing System:

Material: Modified Bitumen  
Built up

#### ● Lighting:

Type: Metal Halide

#### ● Parking Area:

Available from Asset Management Services

#### ● Electrical:

Available from Asset Management Services



## Shelby Oaks Industrial

Shelby Oaks Drive @ Sycamore View · Memphis, TN 38134



### UNIT INFORMATION

**Unit ID:** Y060

**Address:** 6423 Shelby View #104 Memphis, TN 38134

**Unit Area:** 10,000 Square Feet Available

#### ● Exterior Walls:

Material: Concrete  
Tilt Up

#### ● Loading:

Available from Asset Management Services  
# Drive-In Doors - 12

#### ● Floors:

Thickness: 6"

#### ● Clear Heights:

Min. Heights: 26'

#### ● Fire Suppression:

Type: Wet  
ESFR w/500 GPM Fire Pumps

#### ● Column Spacing:

Spacing: 50' x 50'

#### ● HVAC:

Available from Asset Management Services

#### ● Roofing System:

Material: Modified Bitumen  
Built up

#### ● Lighting:

Type: Metal Halide

#### ● Parking Area:

Available from Asset Management Services

#### ● Electrical:

Available from Asset Management Services